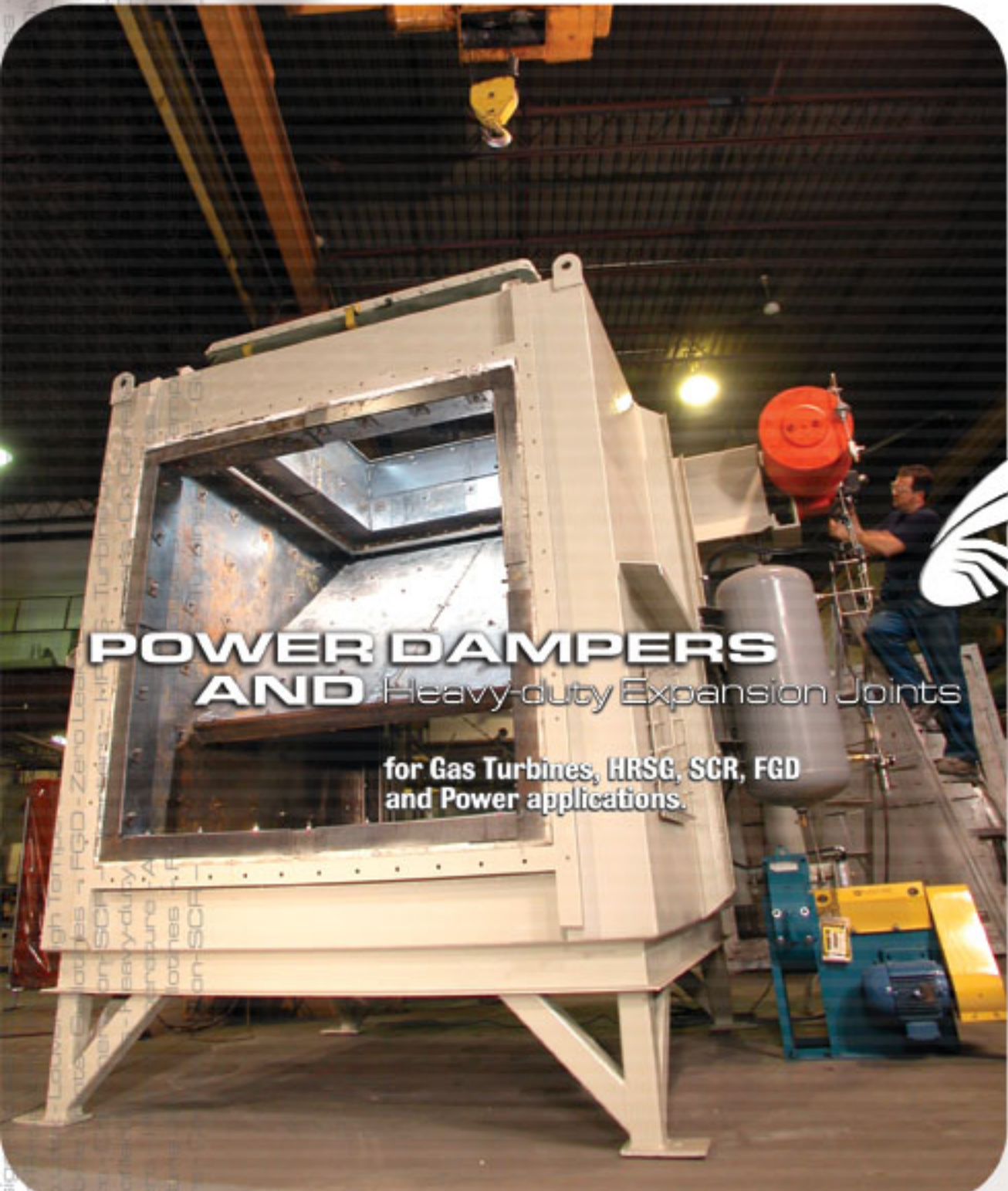


Certified ISO 9001 : 2000



FGD - Zero Leak
HRSG - Turbine
Co-Generation
Profiled Blades - H
High Temp
Turbine Joints - G
Co-Generat
Profiled Blades - H
High Temp



POWER DAMPERS AND Heavy-duty Expansion Joints

for Gas Turbines, HRSG, SCR, FGD
and Power applications.



Heavy-duty desig
ature - Abrasion
FGD - Zero
HRSG - Tur
Dampers
Resistant - P
Zero Leak - Low
HRSG - Tur
Dampers

Engineered. To Order.



POWER DAMPERS

AND Heavy-duty Expansion Joints

for Gas Turbines, HRSG, SCR, FGD and Power applications.

Strength in our reputation.

Flextor has supplied equipment on more than 1000 projects worldwide. Our growing fleet of installed dampers and expansion joints now exceeds more than 5,000 units. Our equipment is operational in systems in the USA, Canada, South America, Egypt, Haiti, Siberia, Hawaii, and many other locations.

Engineered. To Order.

Our goal is to understand your application thoroughly so that we can use our experience to design solutions which best meet your needs. High differential pressures. Rapid opening and closing intervals. High temperatures. Corrosive media. We have the experience and optimal solutions to fit your application. If we don't we will engineer one for you.

Affordability. Now.

Flextor is a value for money leader in the global market. We have streamlined our designs and business process to provide you with affordable yet heavy-duty and reliable solutions.

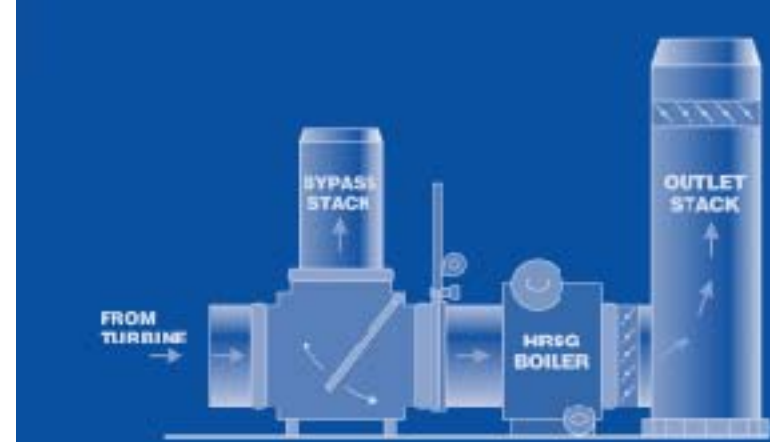
Reliability.

For the long term. All our equipment is designed and fully assembled by our highly qualified staff. No equipment leaves our building without full mechanical testing and certification according to our detailed inspection and testing procedures.

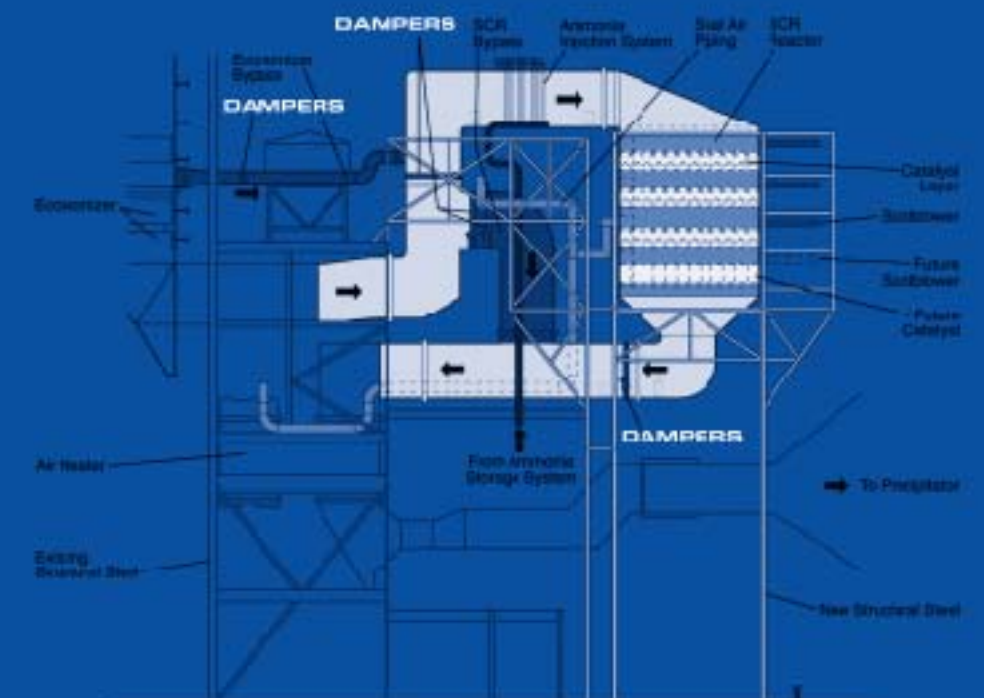
Delivering the goods.

On time. From engineering through to startup, Flextor maintains detailed scheduling and monitoring to ensure that our products are complete, and delivered on-time.

Flextor supplies proven, reliable, and cost-effective solutions for your heavy-duty damper and expansion joint requirements.



Flextor Dampers & Expansion joints have been installed in many Gas turbine systems



Flextor Dampers & Expansion joints have been installed in many Coal fired Power Plants and SCR retrofits.

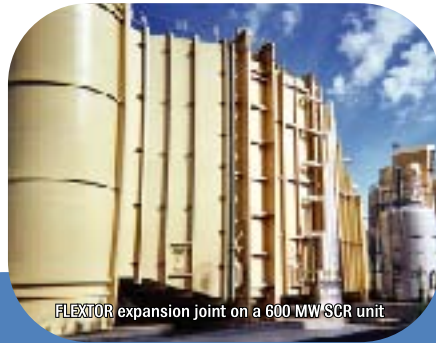
Don't leave your critical applications to chance.

Abrasion. Corrosion. Rapid and voluminous gas streams. High temperatures. The challenges of the power and process industries are numerous. Flextor has the experience and satisfied customers to ensure that your critical systems work.



FLEXTOR

Design Features



FLEXTOR expansion joint on a 600 MW SCR unit



Drive options Flextor has a wide range of drive options from simple shaft mounted pneumatic actuation, to heavy-duty electric and hydraulic actuation with fail safe configurations, battery back-up for electric fail-safe requirements, and reserve air for fail-safe pneumatic requirements. Drive configurations available include direct-mounted or floor mounted electric drives for open/shut operation or modulation, pneumatic drives and hydraulic drives complete with hydraulic-power-unit.

Seat configurations Depending on the application, seat configuration can play a major role in the reliability of any damper. Flextor offers many configurations to meet your application. Swing-through, Metal-to-Metal bar seat, sloped bar seat, blade-lip leaf seal, composite fabric seats for very high shut-off in low temperature applications, and High-Flex metal seats for very tight shut-off in high temperature applications. Double seat with seal air fan for man-safe applications. Blow-off configurations available for high dust-loading environments.

Stuffing box / bearing options Bearings make the difference. Our dampers are designed with bearings that meet the challenges of the operation, yielding high levels of efficiency and reliability. Machined coupling glands and compression glands available. Self-aligning maintenance free roller bearings and sleeve bearings can be used to meet your project needs.

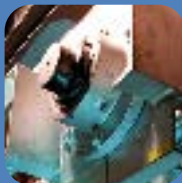
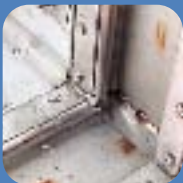
Linkage designs All Flextor linkages are selected for the application. Simple, to complex, linkages are available to meet the operating requirements of the damper. Our linkage configurations include parallel blade configurations, opposed blade configurations, double linkages for dampers with double rows of blades, and thermally compensating linkages for over-size applications where thermal expansion needs to be considered to ensure damper reliability.

Blade designs Flextor dampers are available with simple blades, structural blades, thermally compensating blades, and profiled blades. For applications where heat retention is necessary, blades can be insulated.



61, CHEMIN DU TREMBLAY
BOUCHERVILLE (QUEBEC) J4B 7L6 CANADA
TEL.: 450.449.9882 • FAX: 450.449.9883
TOLL FREE: 1.888.FLEXTOR

WWW.FLEXTORINC.COM
INFO@FLEXTORINC.COM



FLEXTOR'S INDUSTRIAL RANGE

- Coal fired power plants
- Natural Gas turbine plants
- SCR plants
- HRSG systems
- Cement plants
- Smelting
- Incineration
- Other process industries

FLEXTOR'S PRODUCT RANGE

- Diverter dampers
- Louver dampers
- Double louver dampers
- Tandem louvers
- Butterfly dampers
- Guillotine dampers
- Radial Vane dampers
- Low-leak & Man-safe configurations
- Fabric Joints for SCR and Flue Gas
- High temperature Turbine Joints

FLEXTOR'S OTHER SERVICES

- Planning & Engineering
- CFD analysis
- Finite element analysis
- Installation and supervision
- Commissioning
- Service and maintenance